

Our Completed Projects



Amrutha Sarovar @ Kadugodi



Amrutha Value @ Whitefield

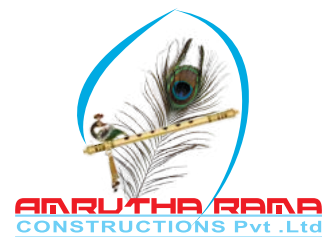


Amrutha Heights @ Whitefield



Amrutha Heights Phase II @ Whitefield

On Going Projects



Contact Details :

Bangalore Office Address:
Flat No. 304, Amrutha Sparkling Nest,
Mahadevapura, Bangalore-560048.

Head Office Address:
Flat No.609, Amrutha Hills, Satya Gardens,
Manikonda, Telangana.

Site address:
Survey No: 51, Nalluruhalli Main Road,
Whitefield, Bangalore-560066.

Mob: 63649 63644
90080 77754

Tel: 080-49536837
Email: amrutharamacons@gmail.com
Web: www.amruthabuilders.com

Project financed by
LIC HOUSING FINANCE LIMITED.



Structural Consultants Contact Details :
#39, Muniramappa Garden, Geddalahalli,
Sanjay Nagar, Bangalore 560094.
Tel: 080 235 1 3236
Mob: +91 94496 95192
Email: adharshila_12@yahoo.co.in



Architect Contact Details :
No.8, MSB-1, Mezzanine Floor, KSCMF Building,
Cunningham Road, Bangalore - 560 052.
Tel: 080 - 2225 3532 / 4090 0726
Email: design@aslamarchitects.com
Web: www.aslamarchitects.com

Note: This brochure is a purely conceptual presentation and not a legal offering. The developers reserve the right to change plans, specifications and features without prior notice or obligation, at their sole discretion. Specifications, write ups, layouts, plans and pictures shown in this booklet are only indicative. All renderings, images and maps are the artists' conceptions and not actual depictions of the building, its walls, roadways or landscaping.



**AMRUTHA
PLATINUM
TOWERS**

refined
grandeur





Live the platinum life

Amrutha Platinum raises the skyline of Whitefield, one of Bangalore's most coveted neighborhood. From its elegant contemporary design to its state-of-the-art internal plan features, Amrutha Platinum promises to make dream homes a reality.

With a home in Amrutha Platinum you can expect the luxury and exclusivity of one of Bangalore's premium address.

A home in Amrutha Platinum, makes you a part of Bangalore's elite future. Here is your chance to live at an exclusive landmark.



This image is an artist's impression only.

This is a conceptual image only.

RERA Registration No: PRM/KA/RERA/1251/446/PR/180420/001525.



AMRUTHA
PLATINUM
TOWERS



This image is an artist's impression only.



These are conceptual images only.

Nestled in the heart of Whitefield, Amrutha Platinum is in close proximity to all daily destinations, be it work places towards Marathahalli and ITPL on one side or towards Sarjapur Road and Electronic City on the other. The vicinity has the best of educational institutions, health care options, shopping and fine dining destinations, making it a merry place to live in for your entire family !!

Amrutha Platinum promises its residents a life of exclusivity. Every aspect of the project has been planned to perfection and speaks of architectural excellence. The project stands tall with Ground plus 9 floors in 2 blocks with 2 & 3BHK homes.

You get the feel of independent homes as there are almost no common walls and there is excellent natural lighting and ventilation. The wide corridors make for smooth movement. The internal layout of each home optimises space utilisation and gives you the freedom of doing up your home in the way you always dreamt of doing it !!

platinum exclusivity

platinum living

AMRUTHA
PLATINUM
TOWERS

AMRUTHA
PLATINUM
TOWERS

AMRUTHA
PLATINUM TOWERS

AMRUTHA PLATINUM TOWERS
Project by
AMRUTHA RAMA CONSTRUCTION VELLORE
SY NO 51, HALLARAHALLI VIL
WHITEFIELD, BANGALORE 5
2006

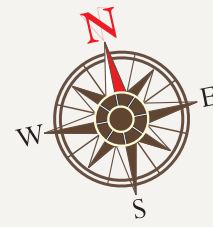
RERA Registration No: PRM/KA/RERA/1251/446/PR/180420/001525.

Providing OC / CC

This image is an artist's impression only.

AMRUTHA PLATINUM TOWERS

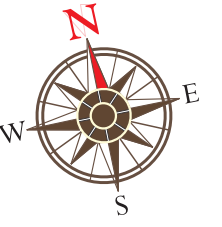
MASTER PLAN



BLOCK A				
UNIT	Ground Floor Area (sqft)	Typical Floor Area (sqft)	FLAT	FACING
1	1479	1597	3BHK	WEST
2	1281	1336	3BHK	WEST
3	1012	1104	2.5BHK	WEST
4	1033	1121	2BHK	WEST
5	1603	1603	3BHK	NORTH
6	1268	1268	3BHK	EAST
7	1268	1268	3BHK	EAST
8	1268	1268	3BHK	EAST
9	1268	1268	3BHK	EAST
10	1268	1268	3BHK	EAST
11	1425	1466	3BHK	EAST
12	1420	1557	3BHK	WEST
13	1178	1178	2BHK	WEST
14	1185	1185	2BHK	WEST
15	1178	1178	2BHK	WEST
16	1178	1178	2BHK	WEST
17	1006	1006	2BHK	WEST
18	1176	1176	2BHK	WEST
19	1371	1371	3BHK	EAST
20	1197	1197	2BHK	EAST
21	1293	1293	3BHK	EAST
22	1293	1293	3BHK	EAST
23	1215	1215	2BHK	EAST
24	1463	1586	2BHK	EAST

AREA STATEMENT

BLOCK B				
UNIT	Ground Floor Area (sqft)	Typical Floor Area (sqft)	FLAT	FACING
25	1555	1555	3BHK	EAST
26	1560	1560	3BHK	EAST
27	1560	1560	3BHK	EAST
28	1560	1604	3BHK	EAST
29	1635	1635	3BHK	WEST
30	1151	1151	2BHK	WEST
31	1177	1177	2BHK	WEST
32	1337	1371	3BHK	WEST
33	1555	1555	3BHK	EAST
34	1248	1248	2BHK	EAST
35	1336	1336	3BHK	EAST
36	1635	1636	3BHK	EAST
37	1594	1594	3BHK	WEST
38	1347	1347	3BHK	WEST
39	1227	1347	3BHK	WEST
40	1140	1279	3BHK	WEST



TYPICAL FLOOR PLAN

platinum amenities

Life at Amrutha Platinum is all about having leisure within your reach. The exquisite lifestyle amenities are the hallmarks of Amrutha Platinum. You can enjoy an active lifestyle and at the same time rest assured that your family is safe always.



This image is an artist's impression only.



These are conceptual images only.



CLUBHOUSE: State-of-the-art recreational facilities to keep your body and mind in shape.



GYM: A fully-equipped gym for the fitness inclined.



JOGGING TRACK : A great way to begin the day with a rejuvenating jog every morning.



SWIMMING POOL: A refreshing retreat away from the hot and hectic world outside.



KIDS' PLAY AREA: A safe haven where your little ones can play without a care in the world.



SENIOR CITIZEN PARK: Just relax, de-stress and enjoy your free time catching up with like minded neighbours.



PARTY HALL: The perfect place to host a gathering and celebrate life's special landmarks.



INDOOR GAMES: Just play game like snooker, chess, table tines with neighbours friends

Facilities

- ◆ Lifts
- ◆ Power back up
- ◆ Car Parking (Covered)
- ◆ Sewage treatment plant
- ◆ 24/7 Security with CCTV Surveillance
- ◆ Rain Water Harvesting
- ◆ Intercom Facility

Specifications

- Structure:**
- ◆ RCC frame structure with necessary footings.
 - ◆ Beams with cement blocks masonry and cement plastering.
 - ◆ Good quality river sand or manufacturing sand.
 - ◆ ISI mark steel.

- Painting:**
- ◆ Interior emulsion for internal walls and common areas.
 - ◆ Exterior emulsion (ACE or APEX Asian paints) for exteriors.

- Flooring:**
- ◆ Vitrified tiles of Kajaria / Johnson / equivalent make for living, dining, kitchen and bedrooms.
 - ◆ Anti-skid tiles of Kajaria / Johnson / equivalent make in toilet & utility.
 - ◆ Entrance lobby: Granite flooring.
 - ◆ Dadoing:
 - Bathroom: Coloured glazed tiles upto 7 feet height.
 - ◆ Lift walls : Granite cladding.

- Doors:**
- ◆ Main door: Teak wood design frame with teak veneer shutters. Teak wood polish, superior quality of brass / chromium fitting and security eye.
 - ◆ Internal doors: Gum Sal frame with flush door shutters.
 - ◆ Bathroom doors: Water proof flush shutters.

- Windows:**
- ◆ UPVC three-track sliding windows with safety grills and mosquito mesh.

- Sanitary ware:**
- ◆ Sanitary ware of Cera / Hindware / Parryware / equivalent.
 - ◆ Dining wash basin with pedestal.
 - ◆ European W.C slick with flush tank. Cello type of wash basin of Hindware sanitary.

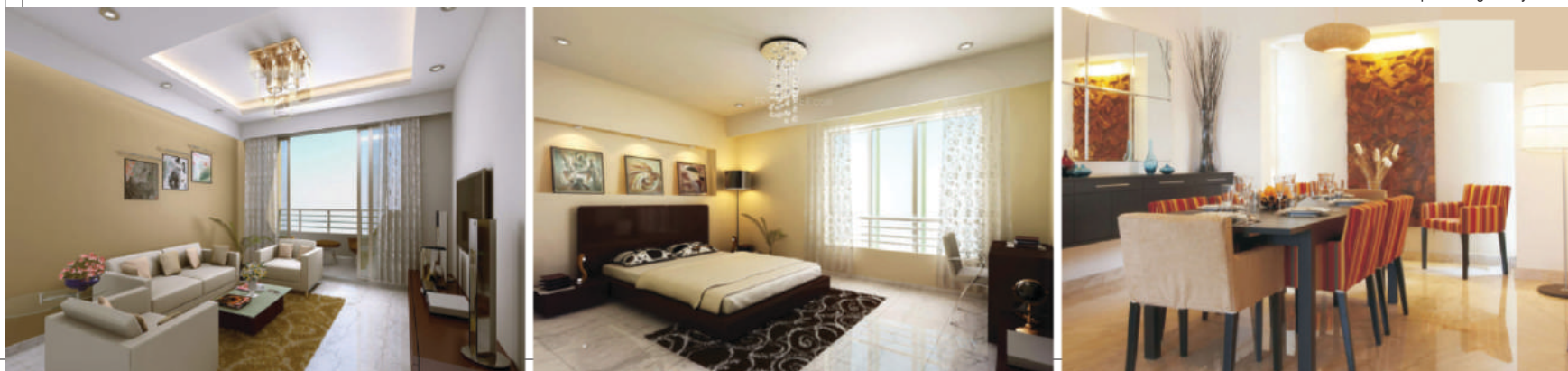
- Lifts:**
- ◆ Passenger lift & Service lift of Schindler / Kone / Johnson / equivalent make.

- Sanitary fittings:**
- ◆ CPVC pipes (Astral make).
 - ◆ Sanitary line (Astral or Prince).
 - ◆ Taps and fittings-CP fittings of Jaguar / Parryware.
 - ◆ Jaguar / Equivalent CP fittings - 2 in 1 wall mixer, over head shower (OHS) and health faucet.
 - ◆ Kohinoor brand CP fittings.

- Electrical:**
- ◆ Wires of 1st quality correct gauge of Anchor or equivalent make.
 - ◆ Great White / Anchor Roma / MK / equivalent model switches. Proper Earth Leakage Circuit Breaker (ELCB).
 - ◆ Telephone point in hall and Master bedrooms.
 - ◆ TV point in hall and Master bedrooms.

- Power Backup:**
- ◆ Genset of Kirloskar / Mahindra / Ashok Leyland / equivalent make.

These are conceptual images only.



Location Map

(Not to scale)



Proximities

Sri Chaitanya Techno School - 4.8 km	Prestige Shanthiniketan - 3.7km	Varthur Main Road - 1.3 km
Euro Kids - 4.7 km	INOX Forum Value Mall - 3.2km	Sarjapur Road - 11.3km
Ryan International School - 11.4km	Inorbit Mall - 2.9km	Electronic City - 25.5km
MVJ College of Engineering - 5.2 km	D Mart - 1.3km	Brookefield - 4.9 km
CMR National PU College - 4.6 km	Decathlon - 6.8km	Hope Forum Signal - 4.2 km
Gopalan College of Engineering & Management - 4.5 km	Phoenix Market City - 9.1km	Whitefield Main Road - 2.0 km
Narayana School - 1.5 km	Vydehi Hospital - 2.9km	ITPL - 2.9 km
Metro Station - 2.5 km	Manipal Hospital - 3.5km	SAP - 4.2 km
Whitefield Railway Station - 7.5 km	Narayana Hrudayalaya - 3.5km	Bagmane Tech Park - 9.0 km
	Columbia Asia Hospital - 2.6km	Eco Space - 8.5 km
	Hope Hospital - 4.6km	JP Morgan Chase - 7.5 km
		Kalyani Tech Park - 4.6 km

Note: The above distances are taken from Google Maps.